

Surface Design Magic & Spring Flora Folios, Part 2
Andie Thrams for TreeSong
April 15, 2023

Folio Creation Steps

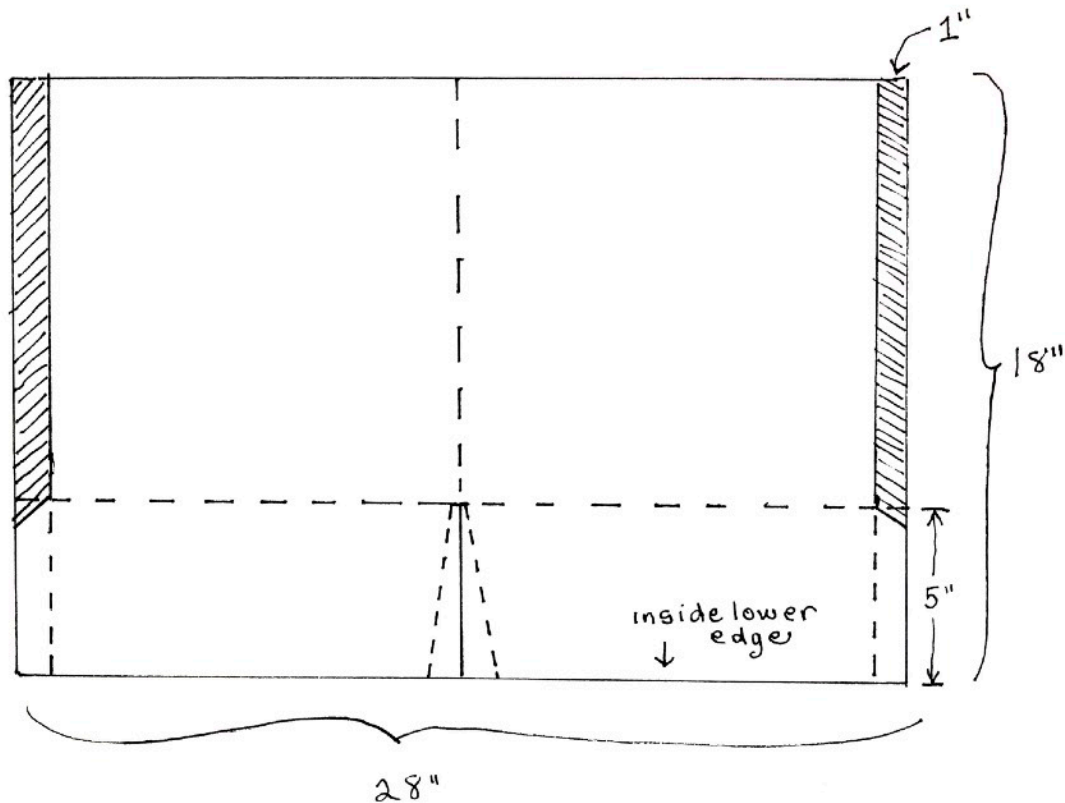
Please read through these steps before we meet, and have them handy during our class. I will demo all steps.


STEPS

1. Before we begin, assemble your tools & materials:
 - Large flat dry painted sheet (flatten by ironing or restrained under weight)
 - Pencil
 - Bone folder or spoon
 - Ruler, as long as you have, metal is best
 - Scissors and/or X-acto knife
 - Cutting mat/surface
 - Wax paper, glassine, or Saran (something non-stick)
 - Several small sheets of scratch paper such as newsprint or printer paper
 - Glue stick (or PVA with brush)
 - Board with weight or heavy book
 - Awl or pushpin
2. Using tools at hand, cut your large sheet down to measure 18 x 28 inches, as square as you can. You can do this ahead, if you wish. And... best to stop here till you see our demos.
3. Your sheet should be oriented in “landscape” fashion. Determine inside and outside, top and bottom. Mark the inside with arrows to remind you.
4. Working on the inside, draw/score a line 1” in from each side, and coax each side to fold in, and bone down.
5. Still working on the inside, mark/score a line 5” up from the lower edge. Fold up and bone down. Open back up, so all folds you’ve made are open and you are looking at the inside, relatively flat sheet.
6. Poke holes on each side where your scores meet.
7. Place a tick mark 1/2” down from each hole, and draw a line connecting them.
8. Do this next step mindfully! Watch first! Cut along your scored line, from the poked hole, ending at the top.
9. Cut a diagonal line from each hole to each tick mark, and remove this strip.
10. You now have 2 tabs, one on each side. You will be applying glue to the OUTSIDE of each tab. Draw lines to indicate the gluing side, to remind you where to glue.
11. Find the center line top to bottom, and make a series of tick marks along the inside. Score along this center line, fold in half, and bone down.
12. Poke another hole in the center where the 2 scores lines intersect, and holes 1/8” to either side (horizontally).
13. Cut from the center hole to the lower edge.
14. Make 2 marks along the lower edge, each 3/4” from the center score.
15. Score lines connecting each hole to each mark at the bottom. Coax each fold, and bone it down.
16. On this second set of tabs, mark where the glue will go (on the outside of your sheet).

17. Using scratch paper guards as demonstrated, apply glue to each tab, one side at a time. Toss glue sheets aside.
18. Use non-stick paper on the inside to prevent excess glue from escaping, and gently bone down your tabs. Remove, and replace with clean non-stick paper.
19. Repeat on other side, and place under weight with non-stick guard sheets in place for a few minutes. (After class, it is good to leave it under weight over night.)
20. Ready for your second sheet!

Now that you've glued it all together, you can continue to embellish, add marks with dry-ish watercolor and gouache, ink, and pencil. It's best not to use very wet media from here on... your folio might warp and or unglue. Now is the time for more careful and detailed work, if you wish. Take a look and see what you think. It may not need any additional work.



- - - - score + fold
 trim away